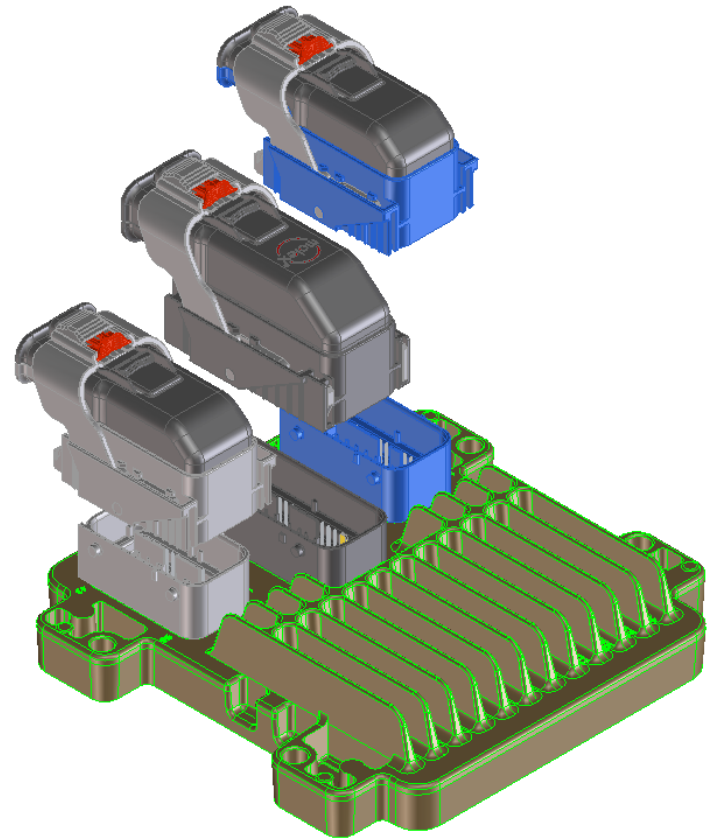
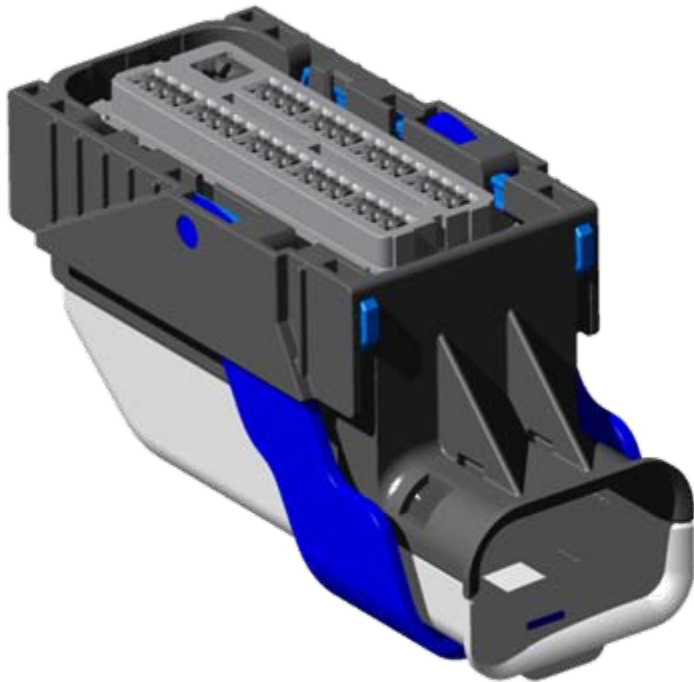


MX123 Sealed Powertrain System

- Vertical header configuration
- Exceeds USCAR requirements
- Circuits: 49, 56, 73, 80
- Used in underhood engine-mounted applications
- Receptacle uses 0.64mm square pin
- Sealed to IP69K requirements
- Over 100Million sold



Design Configurations



- Protects and isolates signal and ground interconnections from environment
- 6 colors and unique keying options
- Two wire dress options, 180 degree orientation
- Multiple configurations possible (73-way shown)
- Available with pin deletes (Knock out patterns) for harness customization and individual seal plugs
- Circuit options
 - 80 way – (80) .64 mm terminals
 - 73 way – (72) .64mm terminals & (1)2.88mm terminal
 - 56 way – (56) .64mm terminals
 - 49 way – (48) .64mm terminals & (1) 2.8mm terminal

Product Description

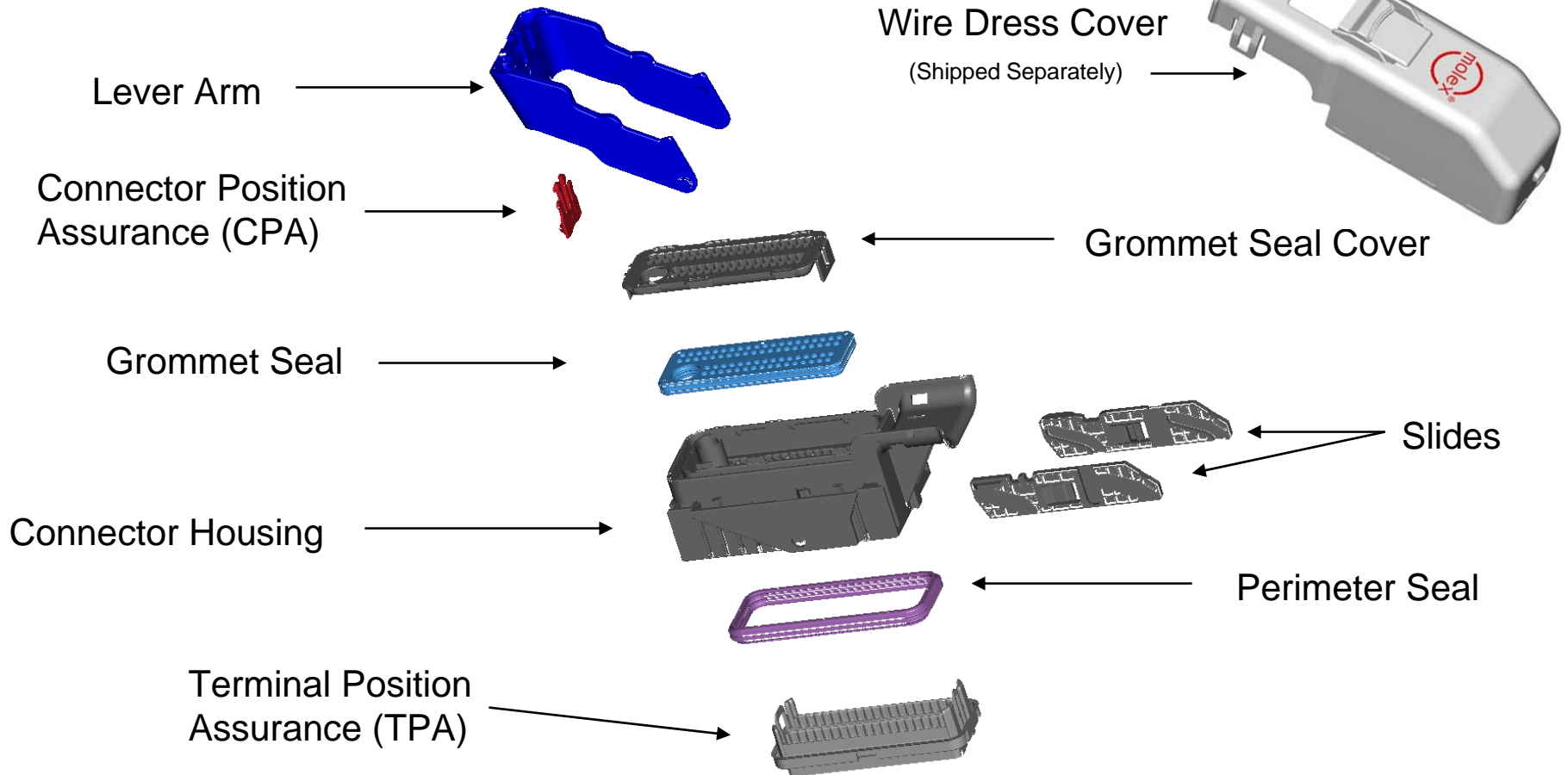
- **Harsh Environment**
 - Under-hood
 - Matte sealed
 - Mechanical mate assist
 - High reliability
 - High vibration applications
- **Consists of a header/integrated module, harness connector, and terminals.**
- **Exceeds the performance requirements of USCAR Class III**
 - - 40 deg C to 125 deg C
 - High pressure spray
 - Mounted on Engine
 - Salt Spray
- **Centerline spacing will be 2.54mm horizontal and 2.54mm vertical (2 rows).**



MX123 Product Information



MX123 Exploded View



Features and Benefits



- **Cam assist lever arm remains in pre-lock position until the harness connector is in the lock position on the header/controller**
- **Integrated TPA and CPA**
- **Anti-scooping features can be used in "blind-mate" conditions**
- **Header terminal filtering eliminates cross talk between adjacent circuits**
- **Connector provides temporary retention to the header before the cam assist lever arm is activated**
- **CPA remains in pre-lock position until cam assist lever arm is locked closed**
- **Available with pin deletes (Knock out patterns) for harness customization or/and individual seal plugs**

