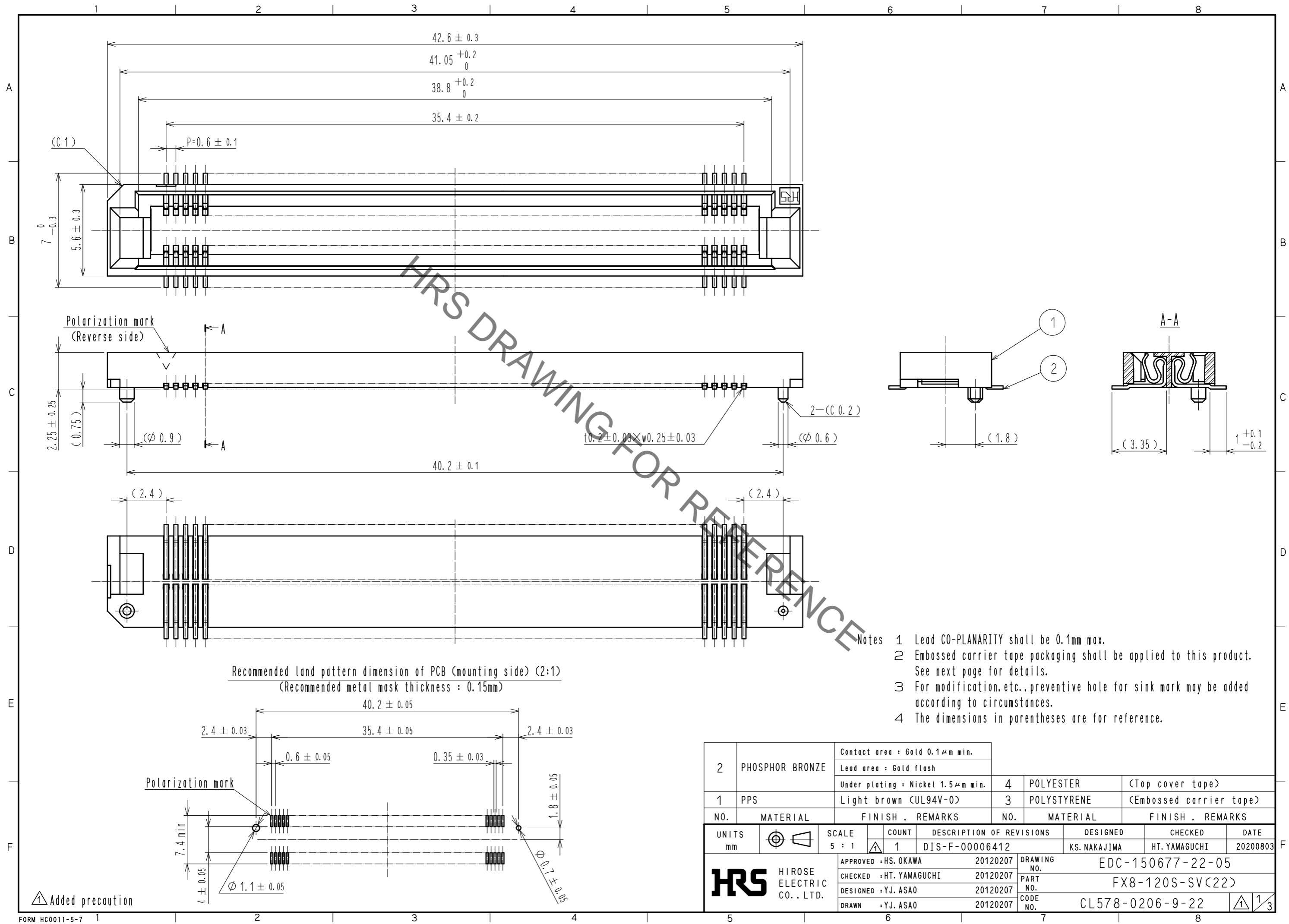


Dec.1.2022 Copyright 2022 HIROSE ELECTRIC CO., LTD. All Rights Reserved.
 In case of consideration for using Automotive equipment / device which demand high reliability, kindly contact our sales window correspondents.



HRS DRAWING FOR REFERENCE

- Notes
- 1 Lead CO-PLANARITY shall be 0.1mm max.
 - 2 Embossed carrier tape packaging shall be applied to this product. See next page for details.
 - 3 For modification, etc., preventive hole for sink mark may be added according to circumstances.
 - 4 The dimensions in parentheses are for reference.

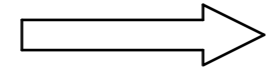
2	PHOSPHOR BRONZE	Contact area : Gold 0.1 μ m min.					
		Lead area : Gold flash					
		Under plating : Nickel 1.5 μ m min.	4	POLYESTER	(Top cover tape)		
1	PPS	Light brown (UL94V-0)	3	POLYSTYRENE	(Embossed carrier tape)		
NO.	MATERIAL	FINISH . REMARKS	NO.	MATERIAL	FINISH . REMARKS		
UNITS		SCALE	COUNT	DESCRIPTION OF REVISIONS		DESIGNED	CHECKED
mm		5 : 1	1	DIS-F-00006412		KS. NAKAJIMA	HT. YAMAGUCHI
				APPROVED : HS. OKAWA	20120207	DRAWING NO. EDC-150677-22-05	
				CHECKED : HT. YAMAGUCHI	20120207	PART NO. FX8-120S-SV(22)	
				DESIGNED : YJ. ASAO	20120207	CODE NO. CL578-0206-9-22	
				DRAWN : YJ. ASAO	20120207		
							1/3

Added precaution

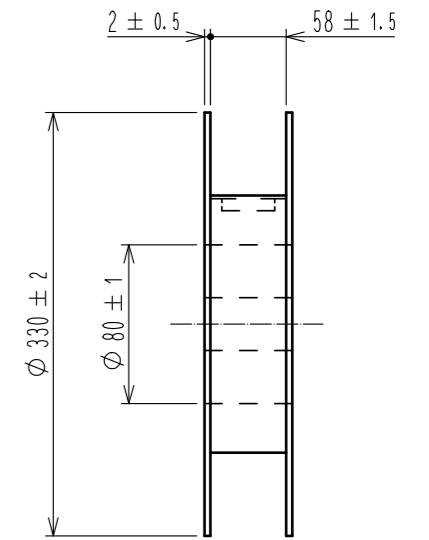
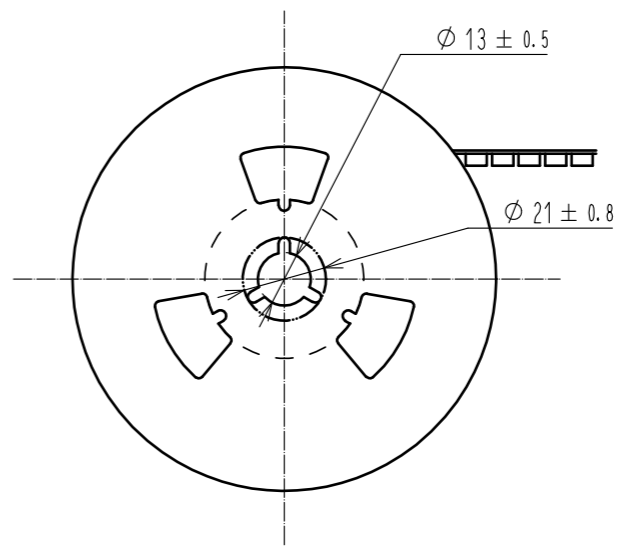
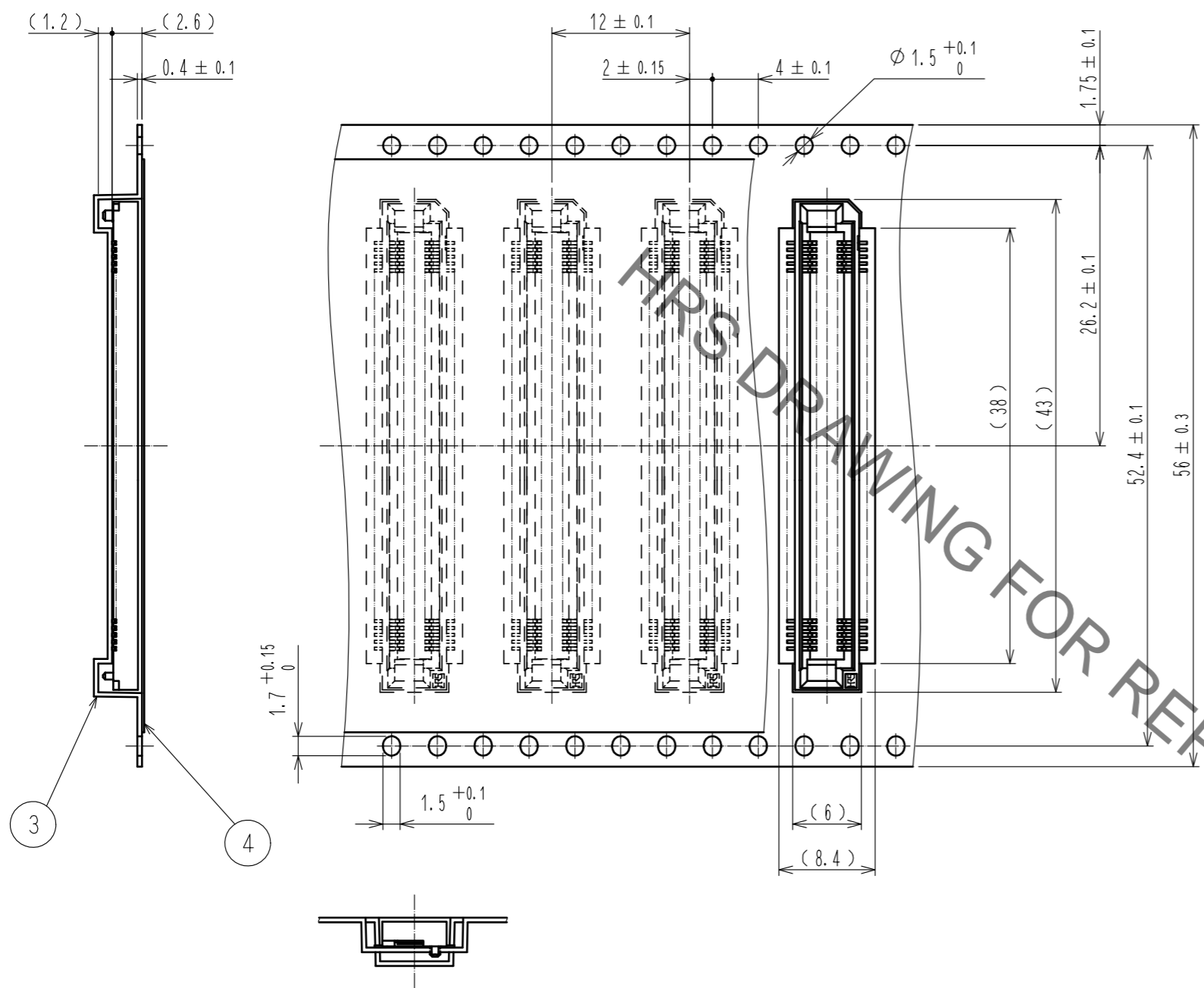
Dec.1.2022 Copyright 2022 HIROSE ELECTRIC CO., LTD. All Rights Reserved.
 In case of consideration for using Automotive equipment / device which demand high reliability, kindly contact our sales window correspondents.

Drawing for packing (2:1)

The direction of pulling out

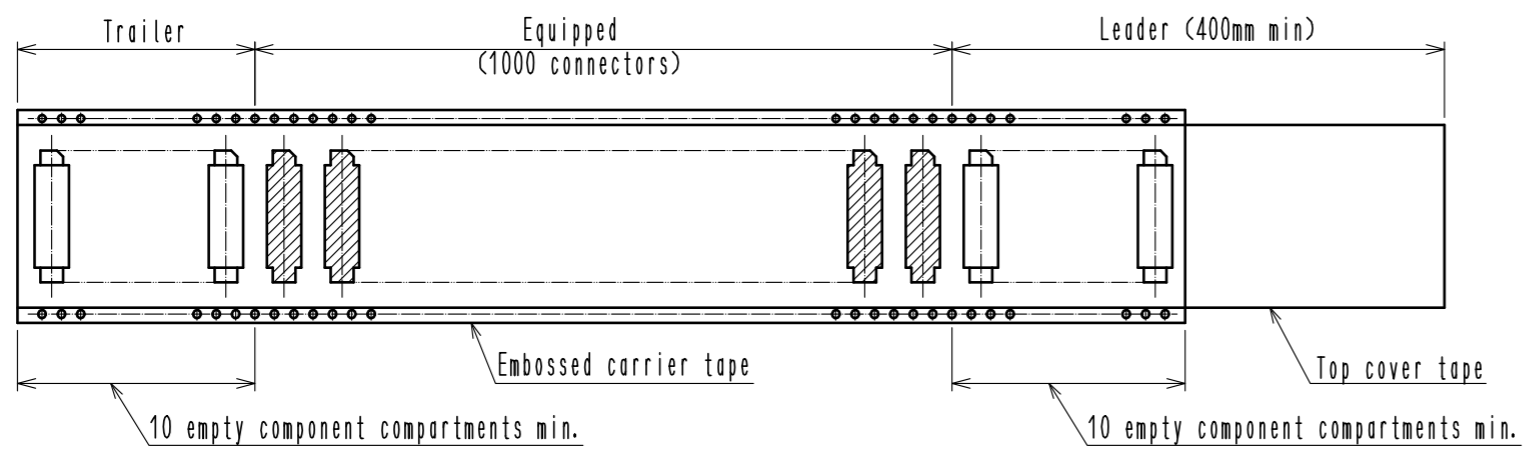


Reel dimension (free)



HRS DRAWING FOR REFERENCE

Notes 5 1 reel : 1000 connectors.



HRS	DRAWING NO.	EDC-150677-22-05	2/3
	PART NO.	FX8-120S-SV(22)	
	CODE NO.	CL578-0206-9-22	

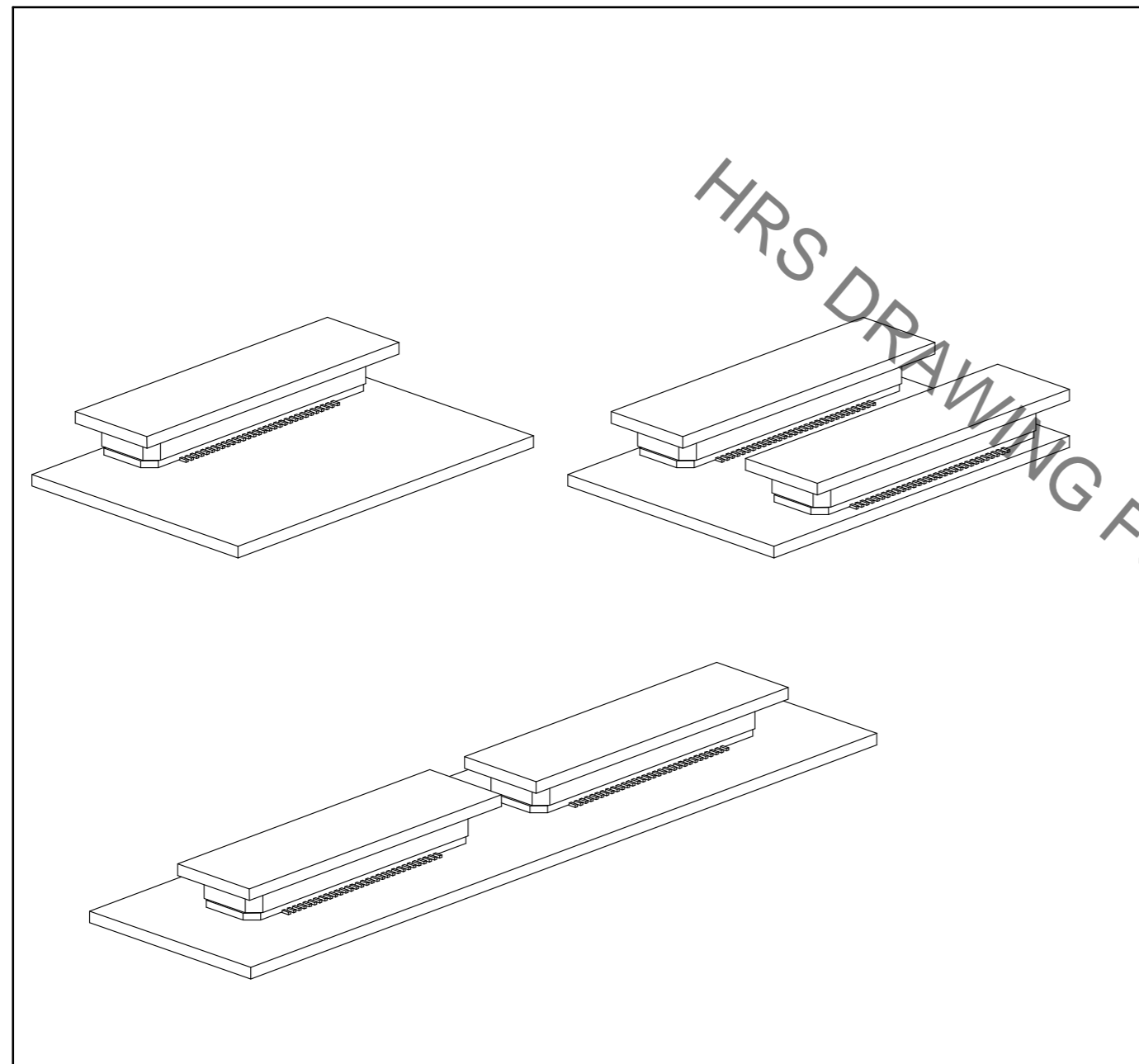
In case of consideration for using Automotive equipment / device which demand high reliability, kindly contact our sales window correspondents.

Dec.1.2022 Copyright 2022 HIROSE ELECTRIC CO., LTD. All Rights Reserved.

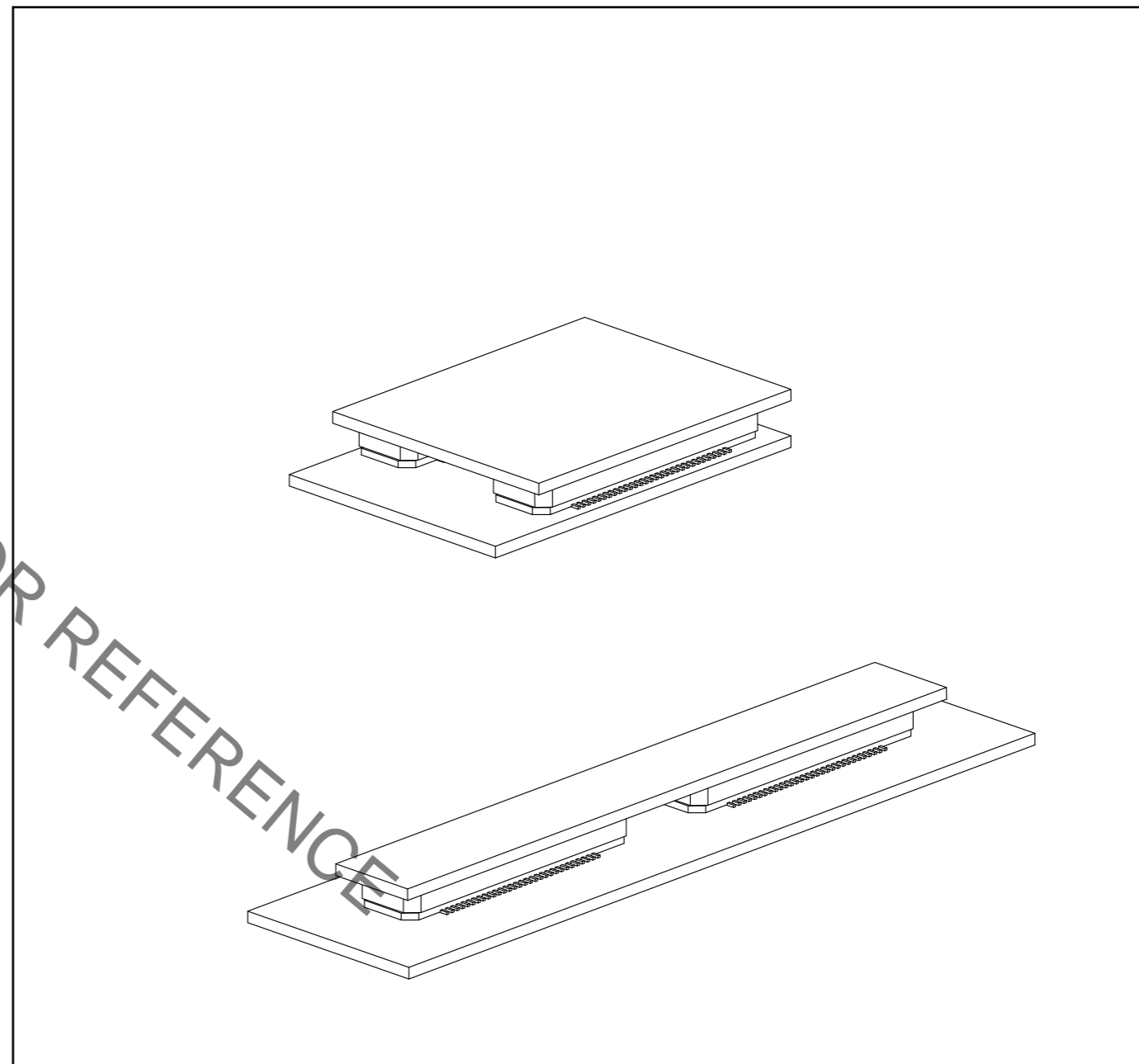
【 Precaution 】

When a board with multiple connectors mounted is mated, the connector may be damaged or deformed.
Please divide one side of the board so only one connector is mated per board.

OK



NG



HRS	DRAWING NO.	EDC-150677-22-05
	PART NO.	FX8-120S-SV(22)
	CODE NO.	CL578-0206-9-22