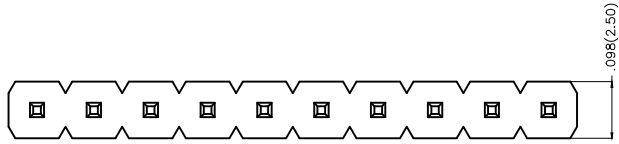


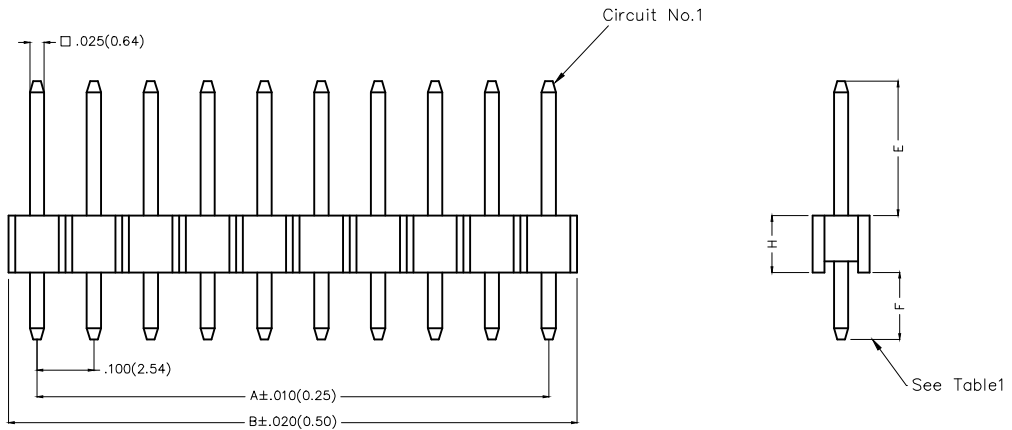
1 2 3 4 5 6 7 8

REV	LOCATIONS	DESCRIPTION	DATE	REVISER	APPD

A



B



SPECIFICATIONS

Electrical
 Current Rating: 3.0A AC(rms)/DC
 Voltage Rating: 250V AC(rms)/DC
 Contact Resistance: 20 mΩ Max
 Insulation Resistance: 1000 MΩ Min
 Withstanding Voltage: 600V AC r.m.s
 Temperature Range—Operating: -40°C~+105°C

Material
 Housing: Glass Filled Polyester (UL 94V-0), Color: Black
 Pin: Brass
 Pin Plating: Gold plated/ Selective gold plated on contact area and 120μ" Min. matte tin plated on tails area

C

A

B

C

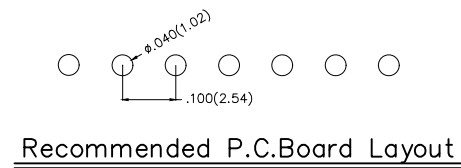
D

D

Ordering Information

FPH 254 48 - S XX S X XX X XX XX X 0 B
 1 2 3 4 5 6 7 8 9 10 11 12 13

E



1 Category FPH-Pin Header	2 Series Number 254-Pitch2.54mm	3 Distinction No. 48	4 Row Option S-Single Row	5 Circuits XX	6 Entry Angle S-180° Vertical	7 Plating 1-Gold plated 7-Selective gold plated on contact area and matte tin plated on tails area
------------------------------	------------------------------------	-------------------------	------------------------------	------------------	----------------------------------	--

E

F

8 Thickness of Plating 01-1μ" 15-15μ" Custom plate available	9 Material-Resin 1-PBT 4-PA6T 5-PA9T	10 E Size 01,02...-Serial number (See Table1)	11 F Size 01,02...-Serial number (See Table1)	12 H Size 1,2...-Serial number (See Table1)	13 Packaging B-PE Bag
---	---	---	---	---	--------------------------

 THIRD ANGLE PROJECTION DESIGN UNITS Inch (metric) SCALE 5:1 SIZE A4	GENERAL TOLERANCES (UNLESS SPECIFIED)		APPROVE BY FRANK	DATE 24/DEC/19	PART NO. FPH25448-SXXSXXXXXXXXX0B	ITEM NO. FPH25448	 Leader Of Industry
	X.±.012(0.30)	X.'±5'	CHECKED BY CHERRY	DATE 24/DEC/19	TITLE Board to Board(Pin Header) Pitch 2.54mm 180° Vertical(DIP)	REV 0	
	X.X±.008(0.20)	.X'±2'	DRAWN BY ZOEY	DATE 24/DEC/19	THIS DRAWING CONTAINS INFORMATION THAT IS PROPRIETARY TO TXGA INDUSTRIAL ELECTRONICS(S.Z)CO.,LTD AND SHOULD NOT BE USED WITHOUT WRITTEN PERMISSION		

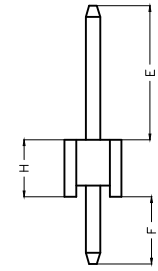
1 2 3 4 5 6 7 8

REV	LOCATIONS	DESCRIPTION	DATE	REVISER	APPD

A Table1

Serial number	Dimensions(in/mm) E	Serial number	Dimensions(in/mm) E
01	.059(1.50)	28	.325(8.25)
02	.069(1.75)	29	.335(8.50)
03	.079(2.00)	30	.344(8.75)
04	.089(2.25)	31	.354(9.00)
05	.098(2.50)	32	.364(9.25)
06	.108(2.75)	33	.374(9.50)
07	.118(3.00)	34	.384(9.75)
08	.128(3.25)	35	.394(10.00)
09	.138(3.50)	36	.404(10.25)
10	.148(3.75)	37	.413(10.50)
11	.157(4.00)	38	.423(10.75)
12	.167(4.25)	39	.433(11.00)
13	.177(4.50)	40	.443(11.25)
14	.187(4.75)	41	.453(11.50)
15	.197(5.00)	42	.463(11.75)
16	.207(5.25)	43	.472(12.00)
17	.217(5.50)	44	.482(12.25)
18	.226(5.75)	45	.492(12.50)
19	.236(6.00)	46	.502(12.75)
20	.246(6.25)	47	.512(13.00)
21	.256(6.50)	48	.522(13.25)
22	.266(6.75)	49	.531(13.50)
23	.276(7.00)	50	.541(13.75)
24	.285(7.25)	51	.551(14.00)
25	.295(7.50)	52	.561(14.25)
26	.305(7.75)	53	.571(14.50)
27	.315(8.00)		

Serial number	Dimensions(in/mm) F	Serial number	Dimensions(in/mm) F
01	.059(1.50)	19	.236(6.00)
02	.069(1.75)	20	.246(6.25)
03	.079(2.00)	21	.256(6.50)
04	.089(2.25)	22	.266(6.75)
05	.098(2.50)	23	.276(7.00)
06	.108(2.75)	24	.285(7.25)
07	.118(3.00)	25	.295(7.50)
08	.128(3.25)	26	.305(7.75)
09	.138(3.50)	27	.315(8.00)
10	.148(3.75)	28	.325(8.25)
11	.157(4.00)	29	.335(8.50)
12	.167(4.25)	30	.344(8.75)
13	.177(4.50)	31	.354(9.00)
14	.187(4.75)	32	.364(9.25)
15	.197(5.00)	33	.374(9.50)
16	.207(5.25)	34	.384(9.75)
17	.217(5.50)	35	.394(10.00)
18	.226(5.75)	36	



Serial number	Dimensions(in/mm) H
1	.039(1.00)
2	.059(1.50)
3	.079(2.00)
4	.098(2.50)

<p>THIRD ANGLE PROJECTION</p>	GENERAL TOLERANCES (UNLESS SPECIFIED)		APPROVE BY FRANK	DATE 24/DEC/19	PART NO. FPH25448-SXXSXXXXXXXXX0B	ITEM NO. FPH25448	<p>Leader Of Industry</p>	
	DESIGN UNITS Inch (metric)	X.±.012(0.30)	.X'±5'	CHECKED BY CHERRY	DATE 24/DEC/19	TITLE Board to Board(Pin Header) Pitch 2.54mm 180° Vertical(DIP)		REV 0
	SCALE 5:1	SIZE A4	X.XX±.006(0.15)	.XX'±1'	DRAWN BY ZOEY	DATE 24/DEC/19	THIS DRAWING CONTAINS INFORMATION THAT IS PROPRIETARY TO TXGA INDUSTRIAL ELECTRONICS(S.Z)CO.,LTD AND SHOULD NOT BE USED WITHOUT WRITTEN PERMISSION	
			X.XXX±.004(0.10)	.XXX'±0.5'				

1 2 3 4 5 6 7 8

REV	LOCATIONS	DESCRIPTION	DATE	REVISER	APPD

A

A

B

B

C

C

D

D



E

E

F

F

Circuits (n)	Part No.	Dimensions(in/mm)		Circuits (n)	Part No.	Dimensions(in/mm)	
		A	B			A	B
1	FPH25448-S01SXXXXXXXXX0B	—	.100(2.54)	21	FPH25448-S21SXXXXXXXXX0B	2.000(50.80)	2.100(53.34)
2	FPH25448-S02SXXXXXXXXX0B	.100(2.54)	.200(5.08)	22	FPH25448-S22SXXXXXXXXX0B	2.100(53.34)	2.200(55.88)
3	FPH25448-S03SXXXXXXXXX0B	.200(5.08)	.300(7.62)	23	FPH25448-S23SXXXXXXXXX0B	2.200(55.88)	2.300(58.42)
4	FPH25448-S04SXXXXXXXXX0B	.300(7.62)	.400(10.16)	24	FPH25448-S24SXXXXXXXXX0B	2.300(58.42)	2.400(60.96)
5	FPH25448-S05SXXXXXXXXX0B	.400(10.16)	.500(12.70)	25	FPH25448-S25SXXXXXXXXX0B	2.400(60.96)	2.500(63.50)
6	FPH25448-S06SXXXXXXXXX0B	.500(12.70)	.600(15.24)	26	FPH25448-S26SXXXXXXXXX0B	2.500(63.50)	2.600(66.04)
7	FPH25448-S07SXXXXXXXXX0B	.600(15.24)	.700(17.78)	27	FPH25448-S27SXXXXXXXXX0B	2.600(66.04)	2.700(68.58)
8	FPH25448-S08SXXXXXXXXX0B	.700(17.78)	.800(20.32)	28	FPH25448-S28SXXXXXXXXX0B	2.700(68.58)	2.800(71.12)
9	FPH25448-S09SXXXXXXXXX0B	.800(20.32)	.900(22.86)	29	FPH25448-S29SXXXXXXXXX0B	2.800(71.12)	2.900(73.66)
10	FPH25448-S10SXXXXXXXXX0B	.900(22.86)	1.000(25.40)	30	FPH25448-S30SXXXXXXXXX0B	2.900(73.66)	3.000(76.20)
11	FPH25448-S11SXXXXXXXXX0B	1.000(25.40)	1.100(27.94)	31	FPH25448-S31SXXXXXXXXX0B	3.000(76.20)	3.100(78.74)
12	FPH25448-S12SXXXXXXXXX0B	1.100(27.94)	1.200(30.48)	32	FPH25448-S32SXXXXXXXXX0B	3.100(78.74)	3.200(81.28)
13	FPH25448-S13SXXXXXXXXX0B	1.200(30.48)	1.300(33.02)	33	FPH25448-S33SXXXXXXXXX0B	3.200(81.28)	3.300(83.82)
14	FPH25448-S14SXXXXXXXXX0B	1.300(33.02)	1.400(35.56)	34	FPH25448-S34SXXXXXXXXX0B	3.300(83.82)	3.400(86.36)
15	FPH25448-S15SXXXXXXXXX0B	1.400(35.56)	1.500(38.10)	35	FPH25448-S35SXXXXXXXXX0B	3.400(86.36)	3.500(88.90)
16	FPH25448-S16SXXXXXXXXX0B	1.500(38.10)	1.600(40.64)	36	FPH25448-S36SXXXXXXXXX0B	3.500(88.90)	3.600(91.44)
17	FPH25448-S17SXXXXXXXXX0B	1.600(40.64)	1.700(43.18)	37	FPH25448-S37SXXXXXXXXX0B	3.600(91.44)	3.700(93.98)
18	FPH25448-S18SXXXXXXXXX0B	1.700(43.18)	1.800(45.72)	38	FPH25448-S38SXXXXXXXXX0B	3.700(93.98)	3.800(96.52)
19	FPH25448-S19SXXXXXXXXX0B	1.800(45.72)	1.900(48.26)	39	FPH25448-S39SXXXXXXXXX0B	3.800(96.52)	3.900(99.06)
20	FPH25448-S20SXXXXXXXXX0B	1.900(48.26)	2.000(50.80)	40	FPH25448-S40SXXXXXXXXX0B	3.900(99.06)	4.000(101.60)

 THIRD ANGLE PROJECTION	GENERAL TOLERANCES (UNLESS SPECIFIED)		APPROVE BY FRANK	DATE 24/DEC/19	PART NO. FPH25448-SXXSXXXXXXXXX0B	ITEM NO. FPH25448	 Leader Of Industry		
	DESIGN UNITS Inch (metric)	X.±.012(0.30)	.X.±5'	CHECKED BY CHERRY	DATE 24/DEC/19	TITLE Board to Board(Pin Header) Pitch 2.54mm 180° Vertical(DIP)		REV 0	SHEET NO. 3/3
	SCALE 5:1	SIZE A4	X.XX±.006(0.15)	.XX±1'	DRAWN BY ZOEY	DATE 24/DEC/19		THIS DRAWING CONTAINS INFORMATION THAT IS PROPRIETARY TO TXGA INDUSTRIAL ELECTRONICS(S.Z)CO.,LTD AND SHOULD NOT BE USED WITHOUT WRITTEN PERMISSION	

1 2 3 4 5 6 7 8